

Tesuque Pueblo

Photographs

Also known as the Tet-Sugeh, the Tesuque Pueblo is in north-central New Mexico.



Dionisia Vigil, Katinita Suasa - Tesuque - 1884



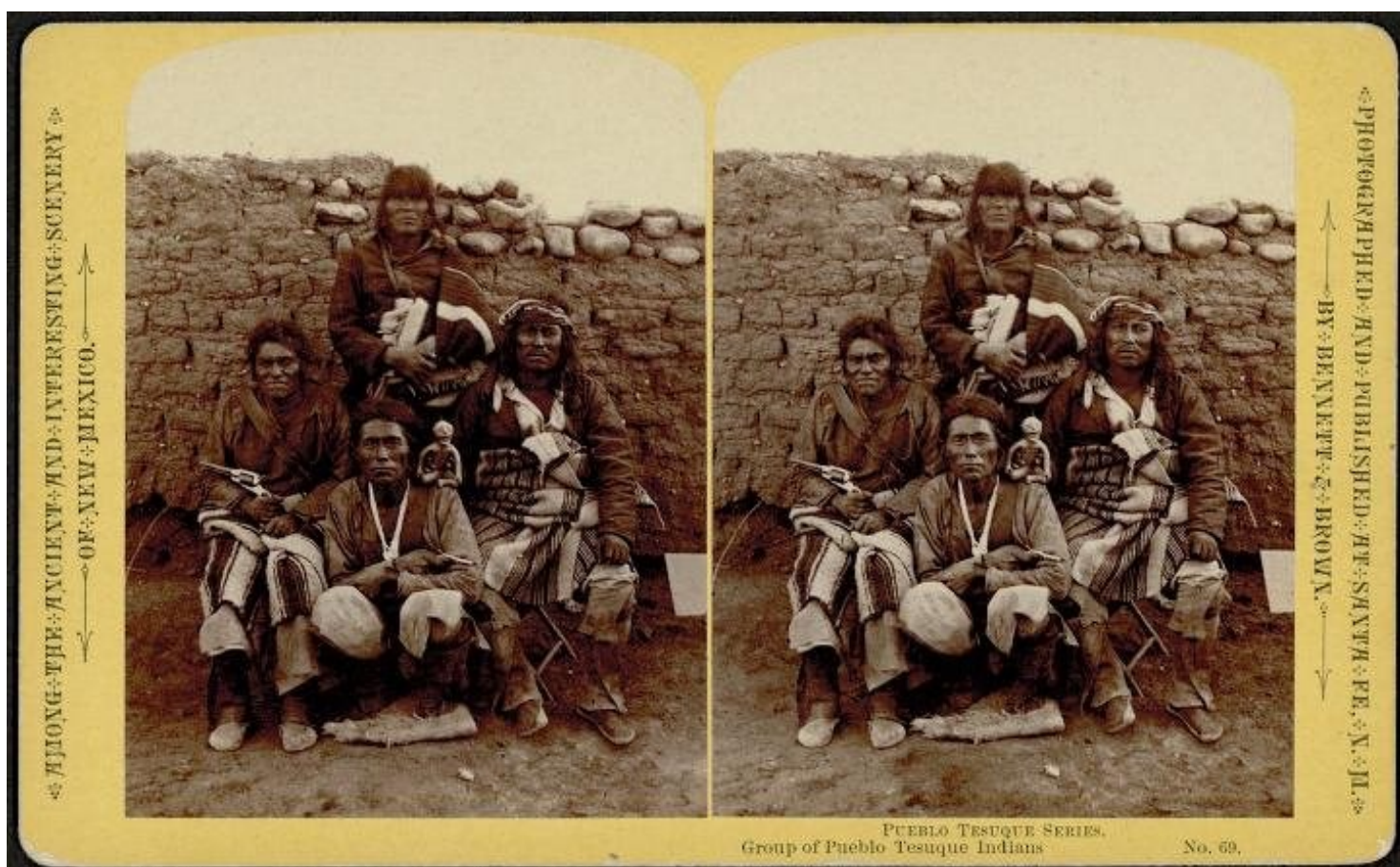
Juan Domingo Suasa - Tesuque - 1884



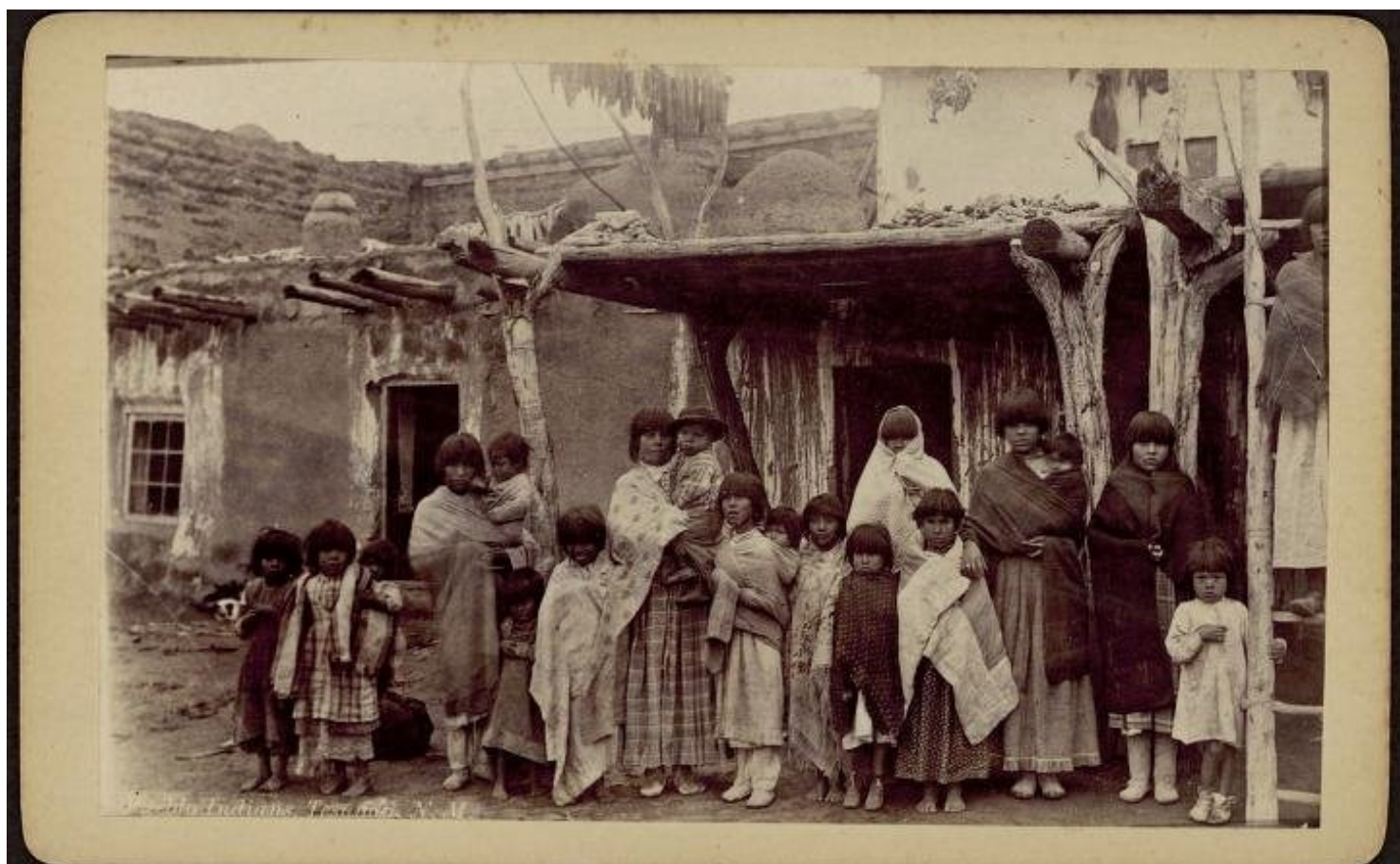
Tesuque women - 1885



Tesuque children - 1885



Tesuque men - 1885



Tesuque women and children - 1885



Tesuque Pueblo - 1885



Published by D. B. CHASE,

Santa Fe, New Mexico.

I have the Largest Assortment of Views in the southwest.

No. 50. Indian Girl from Tesuque.

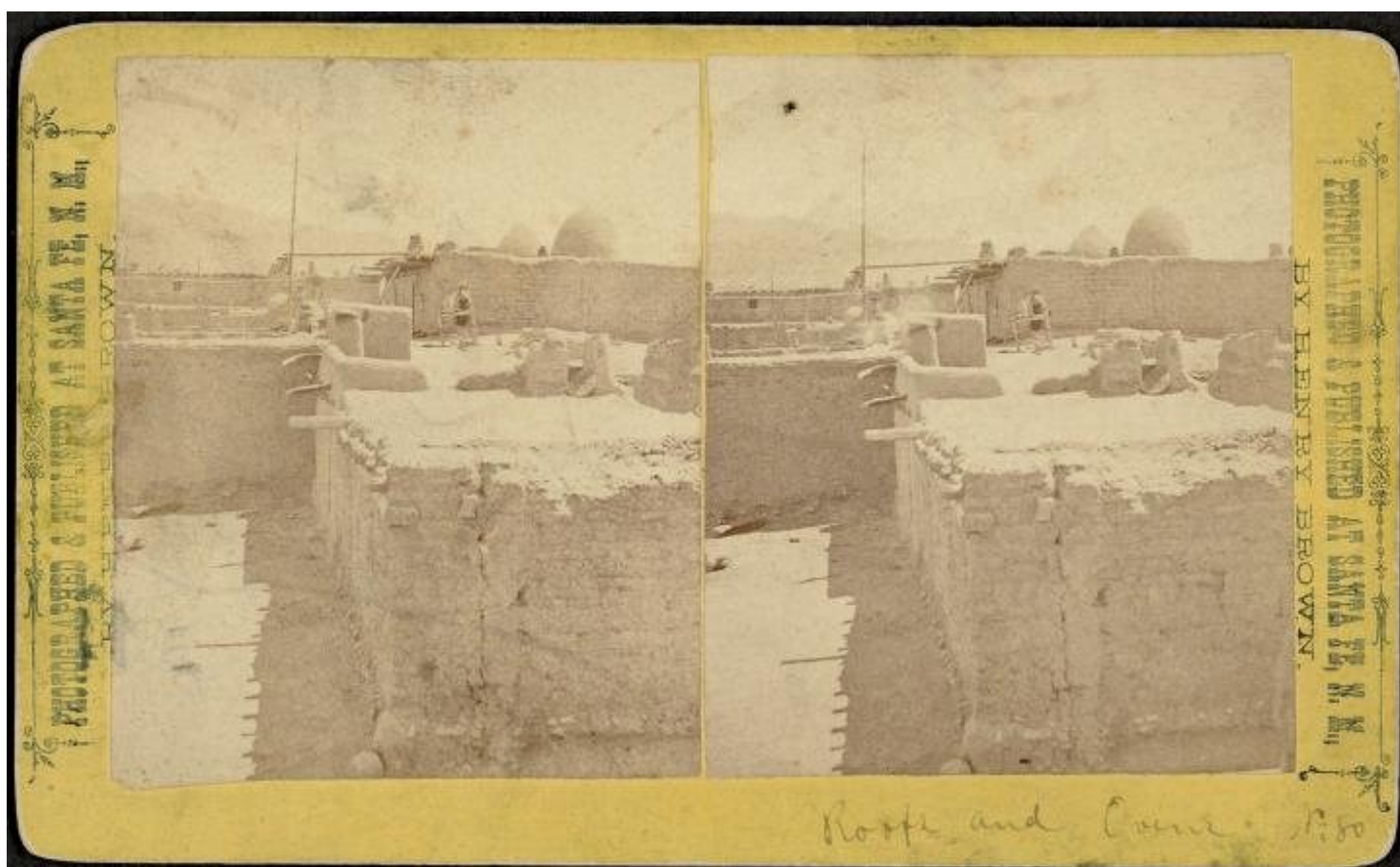
Tesuque woman - no date



Tesuque girls - no date



Tesuque woman - 1885

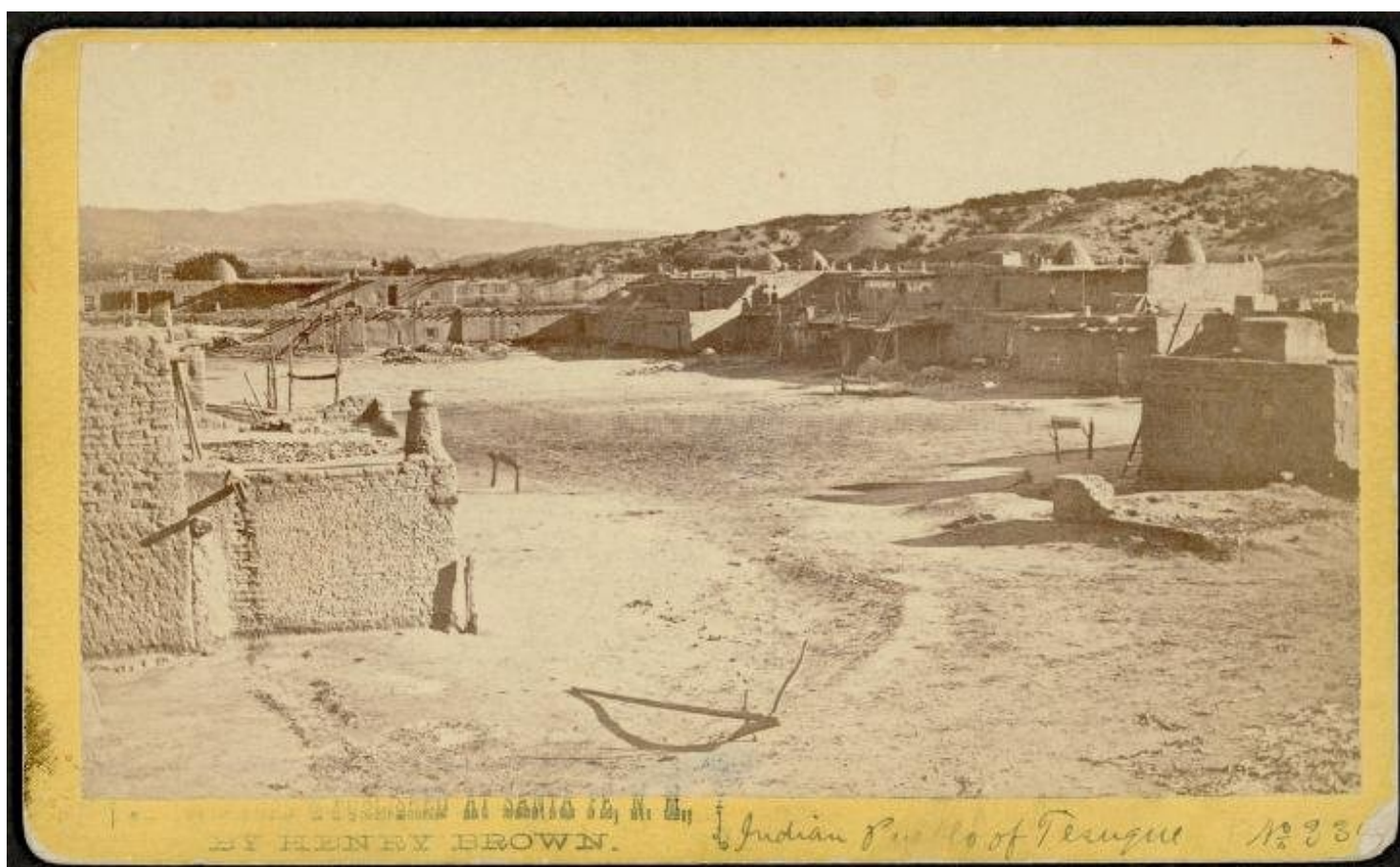


Tesuque Pueblo - 1885



No. 29. Ancient Pueblo of Tesuque, East Side.—D. B. Chase, Photographer, Santa Fe, N. M.

Tesuque Pueblo - 1885



Tesuque Pueblo - 1885



Tesuque Pueblo - 1885



Tesuque woman - 1896



Tesuque men with non-Indian boy - no date



Elias - Tesuque - no date



Elias - Tesuque - no date



A Tesuque mother and baby. The child is asleep in the cradle swinging by cords from beams in the ceiling.

Tesuque woman and baby - no date



Tesuque man - 1899



Tesuque man - 1899



Tesuque men - 1899



Tesuque women - no date



Tesuque woman - no date



Tesuque man and child - no date



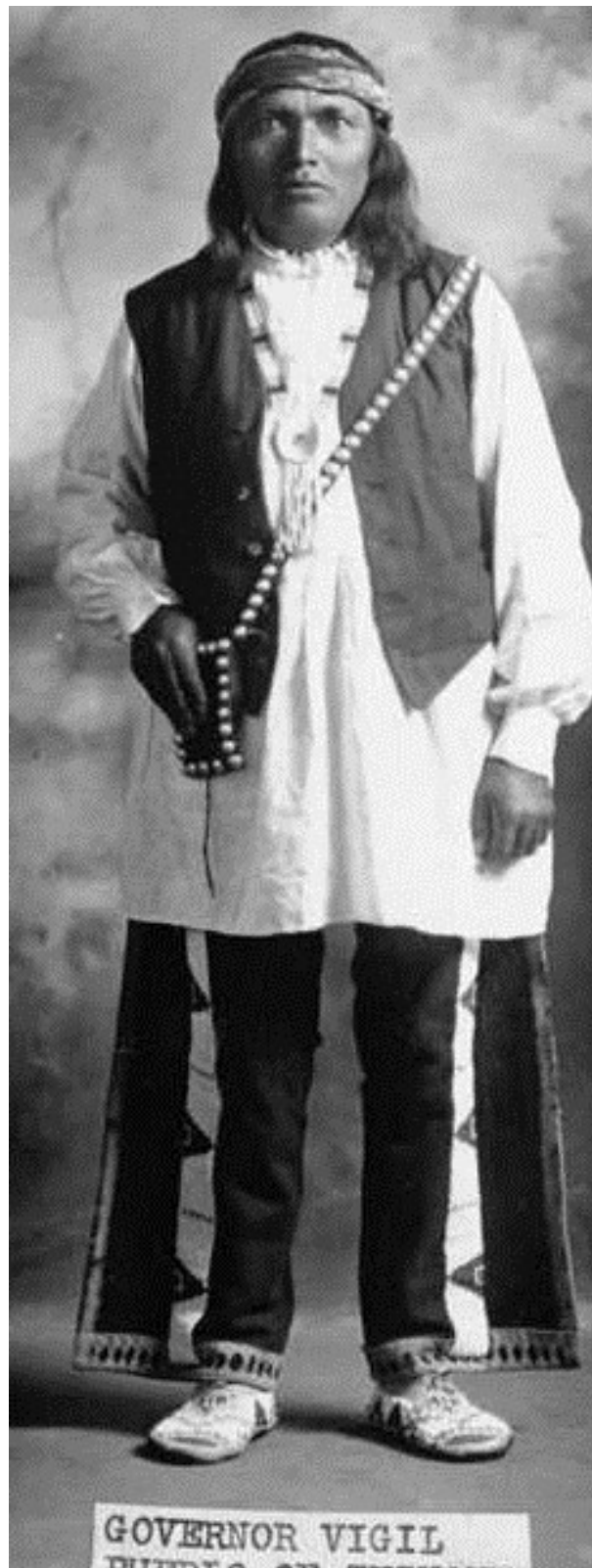
Tesuque group - 1890



Elario Vigil - Tesuque - 1910



Elario Vigil - Tesuque - 1910



Elario Vigil - Tesuque - 1910



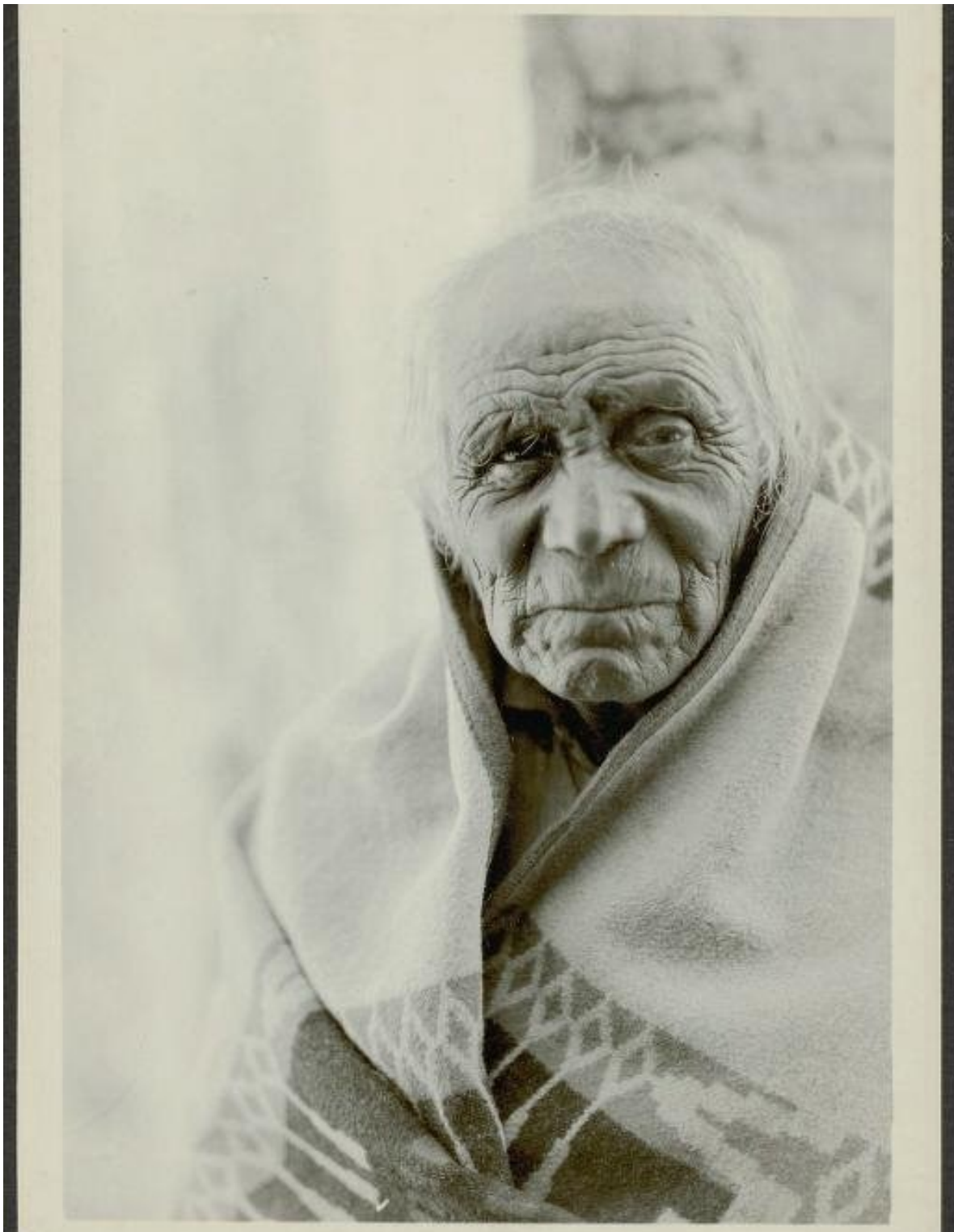
Tomas Vigil (the son of Elario Vigil) - Tesuque - 1910



Tesuque family - 1920



Martin Vigil - Tesuque - 1923



Teofolo Ortega - Tesuque - 1925



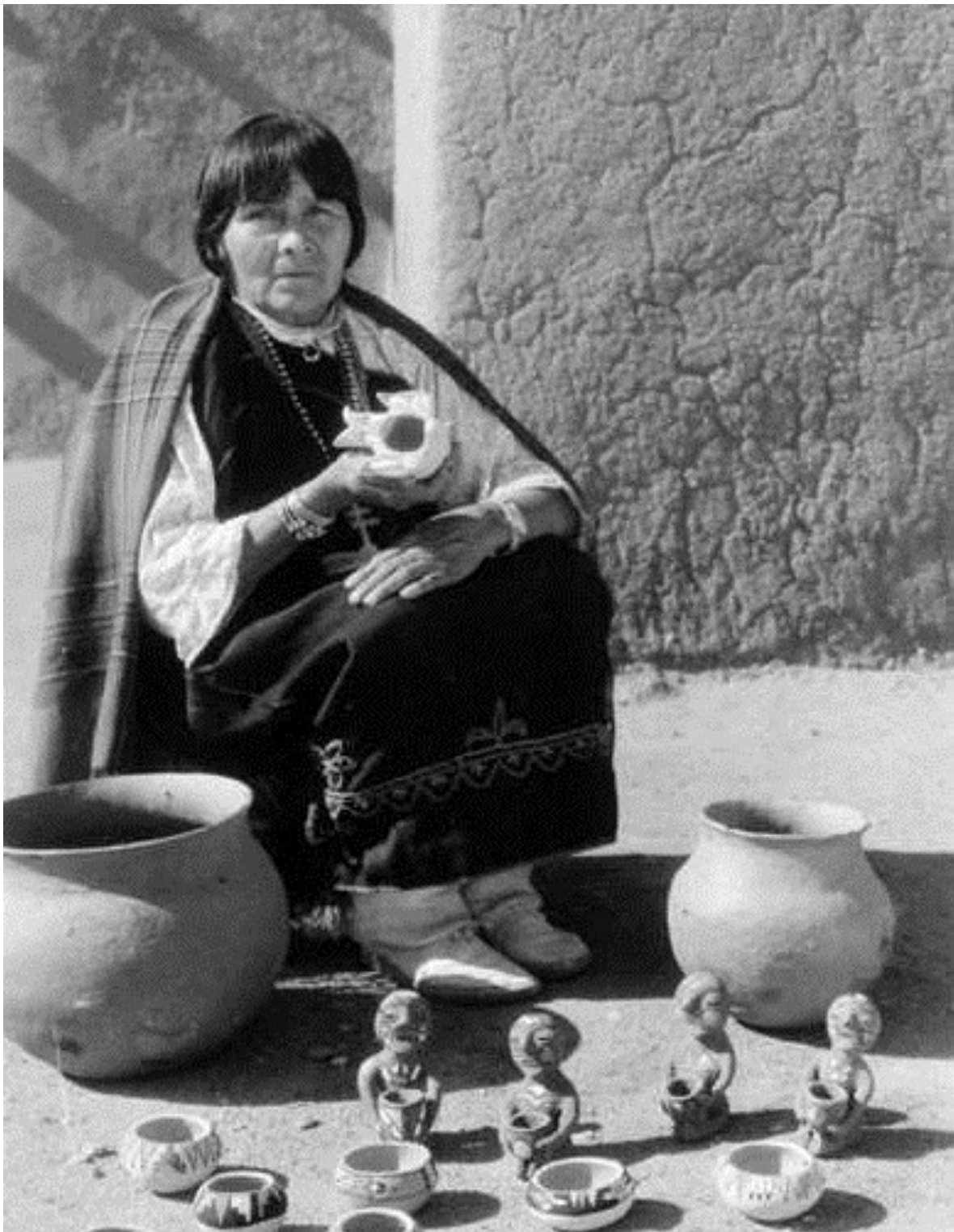
Tesuque men prepared to participate in a Buffalo Dance - 1925



Tesuque boys - 1931



Martin Vigil - Tesuque - 1931



Tesuque woman - no date



Tesuque Pueblo - 1900



*Catherine Vigil and her husband Martin Vigil - Tesuque -
1931*



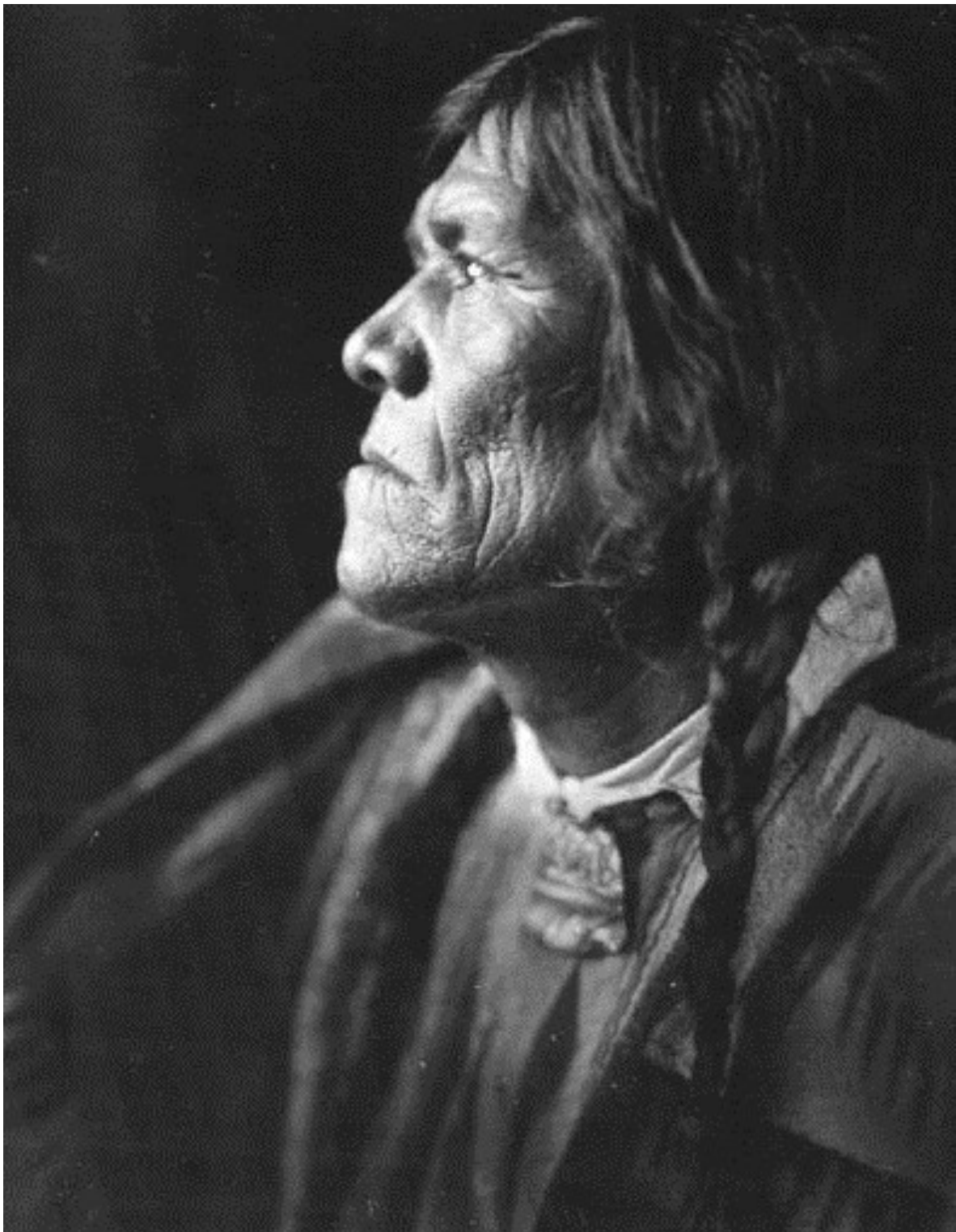
Tesuque women - 1935



Tesuque woman - 1940



Senovio Romero - Tesuque - 1913



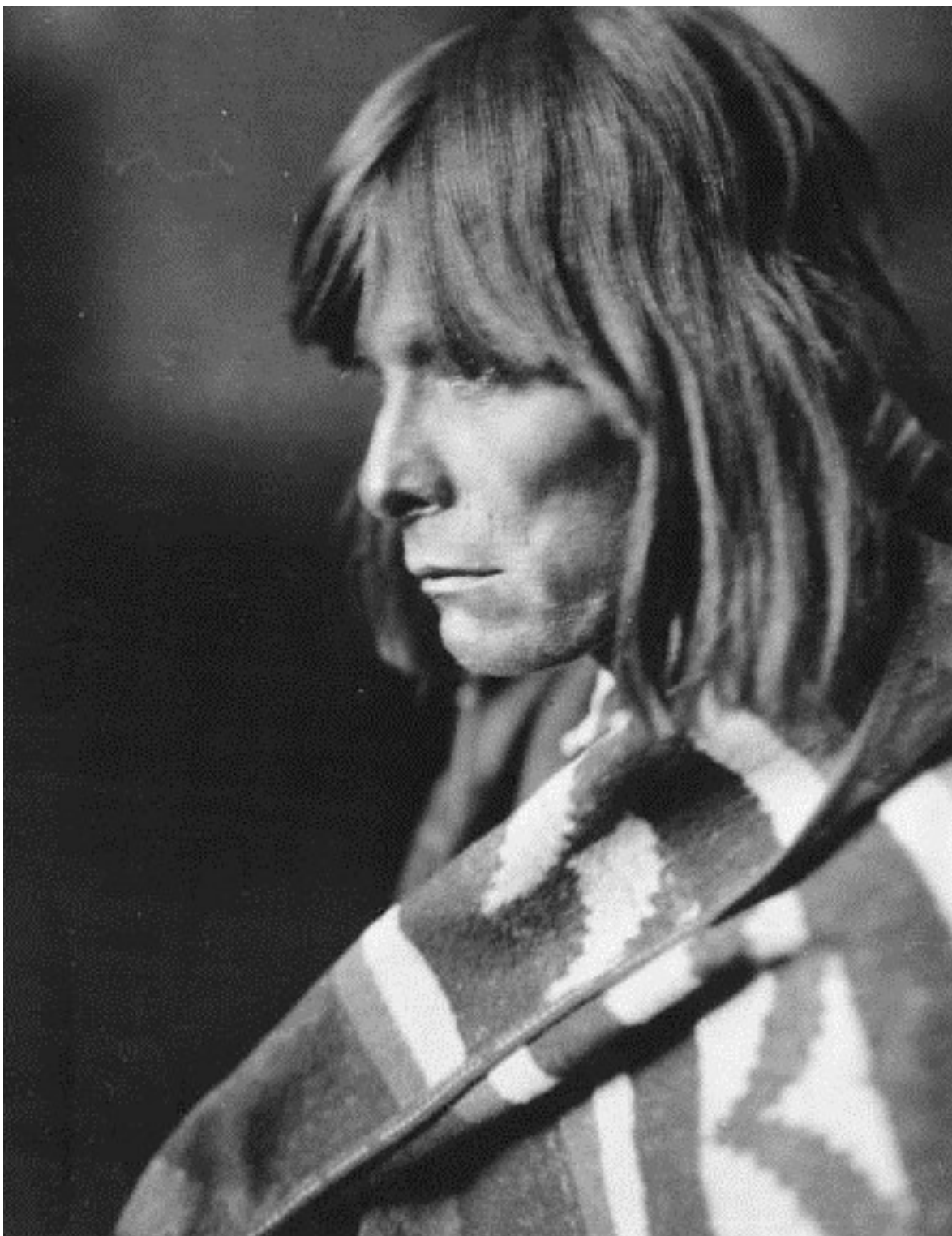
Elias Suaso - Tesuque - 1913



Elias Suaso - Tesuque - 1913



Juan de Jesus de Pino - Tesuque - 1913



Juan de Jesus de Pino - Tesuque - 1913



Jesus La Cruz Herrera - Tesuque - 1920



Tesuque Buffalo Dancers - 1915



Tesuque Buffalo Dancers - 1925



Tesuque man - 1925



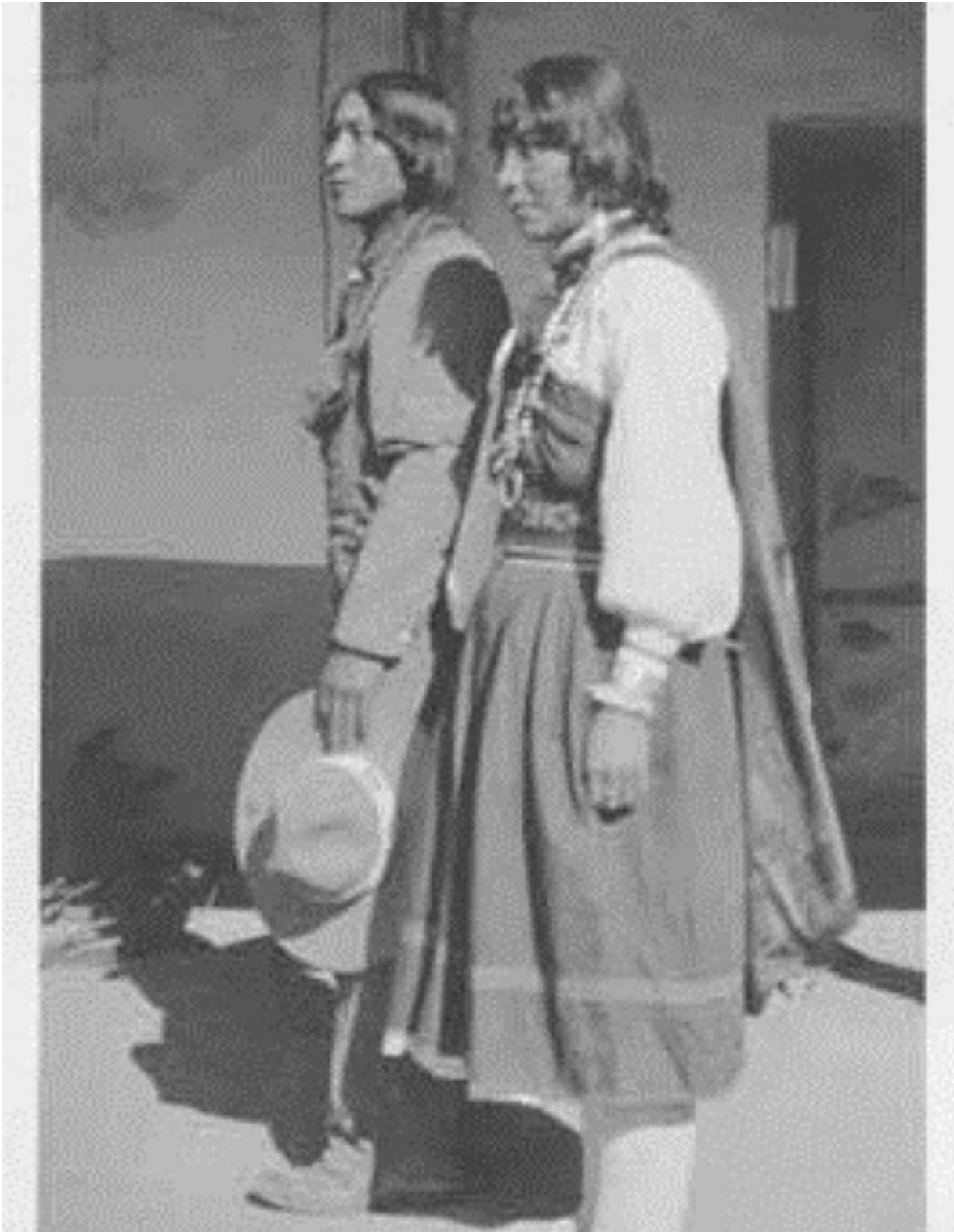
Benita Romero (wife of Senovio Romero) - Tesuque - 1906



Maria Suazo - Tesuque - 1915



Toe Dancer (Maria C. Herrera) and her daughter, Medicine Flower - Tesuque - 1930



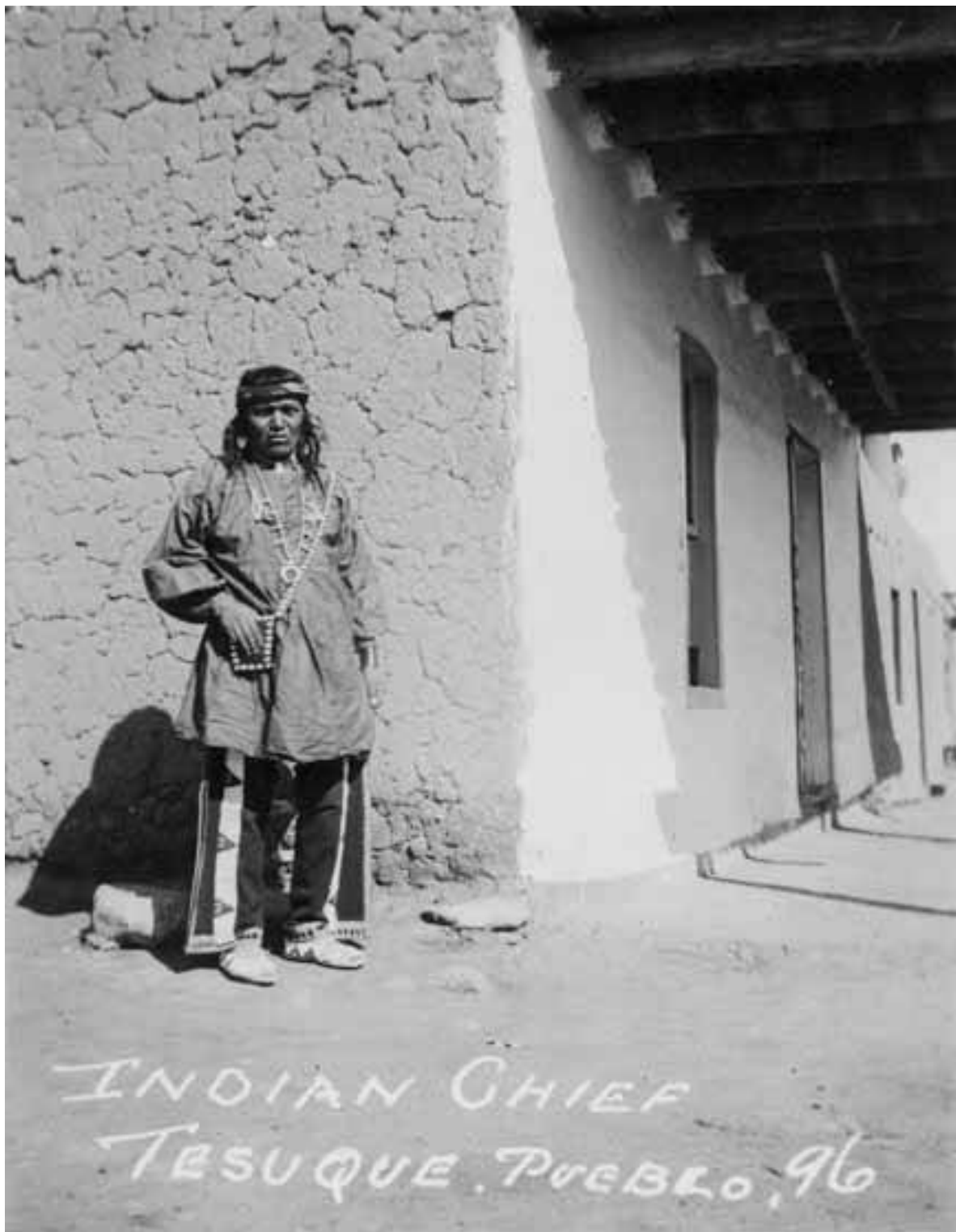
*Jose La Cruz Herrera and his sister, Appalonia Herrera -
Tesuque - 1925*



Jose Candido Herrera - Tesuque - 1941



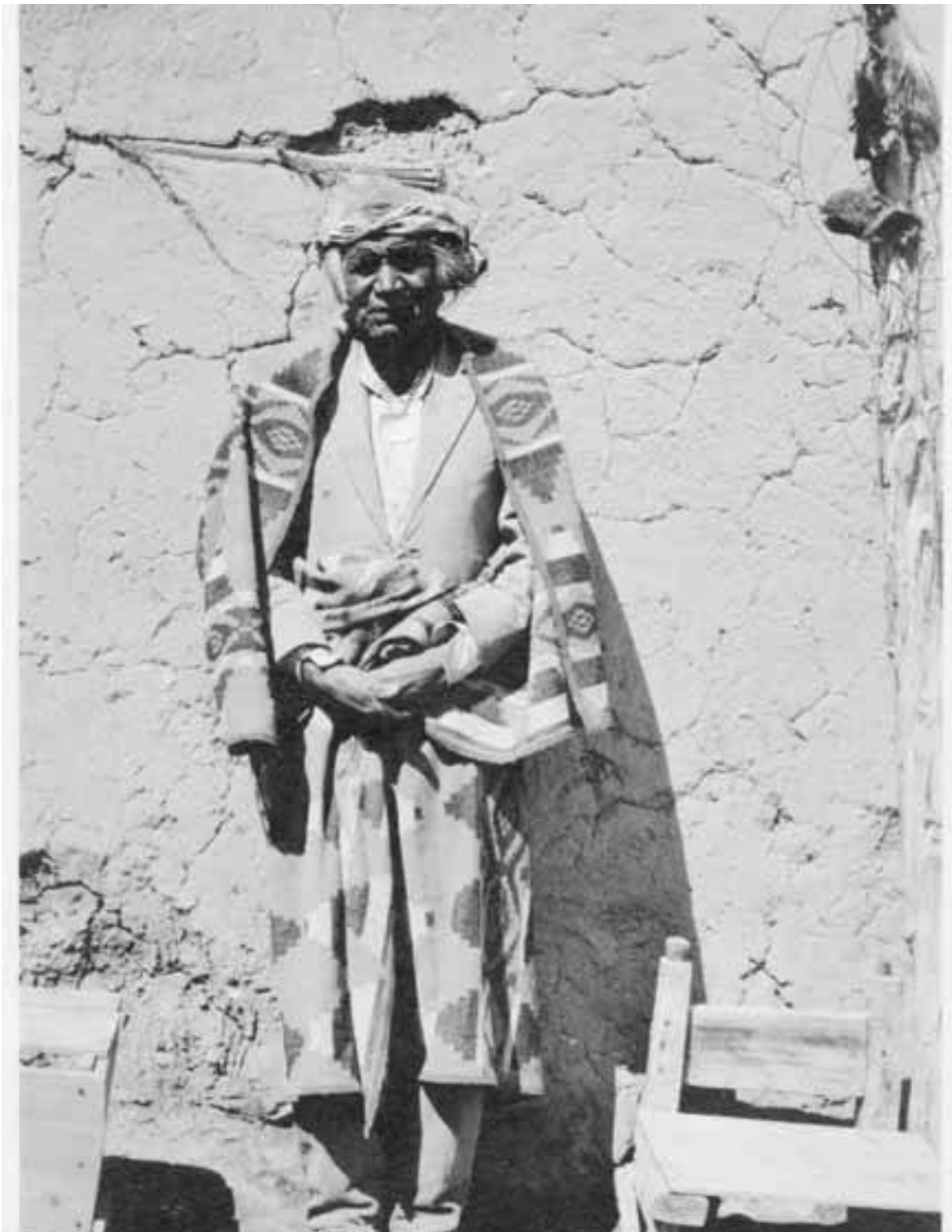
Teofilo Romero - Tesuque - 1925



Elario Vigil - Tesuque - 1896



Cecelia Vigil and her children - Tesuque - 1909



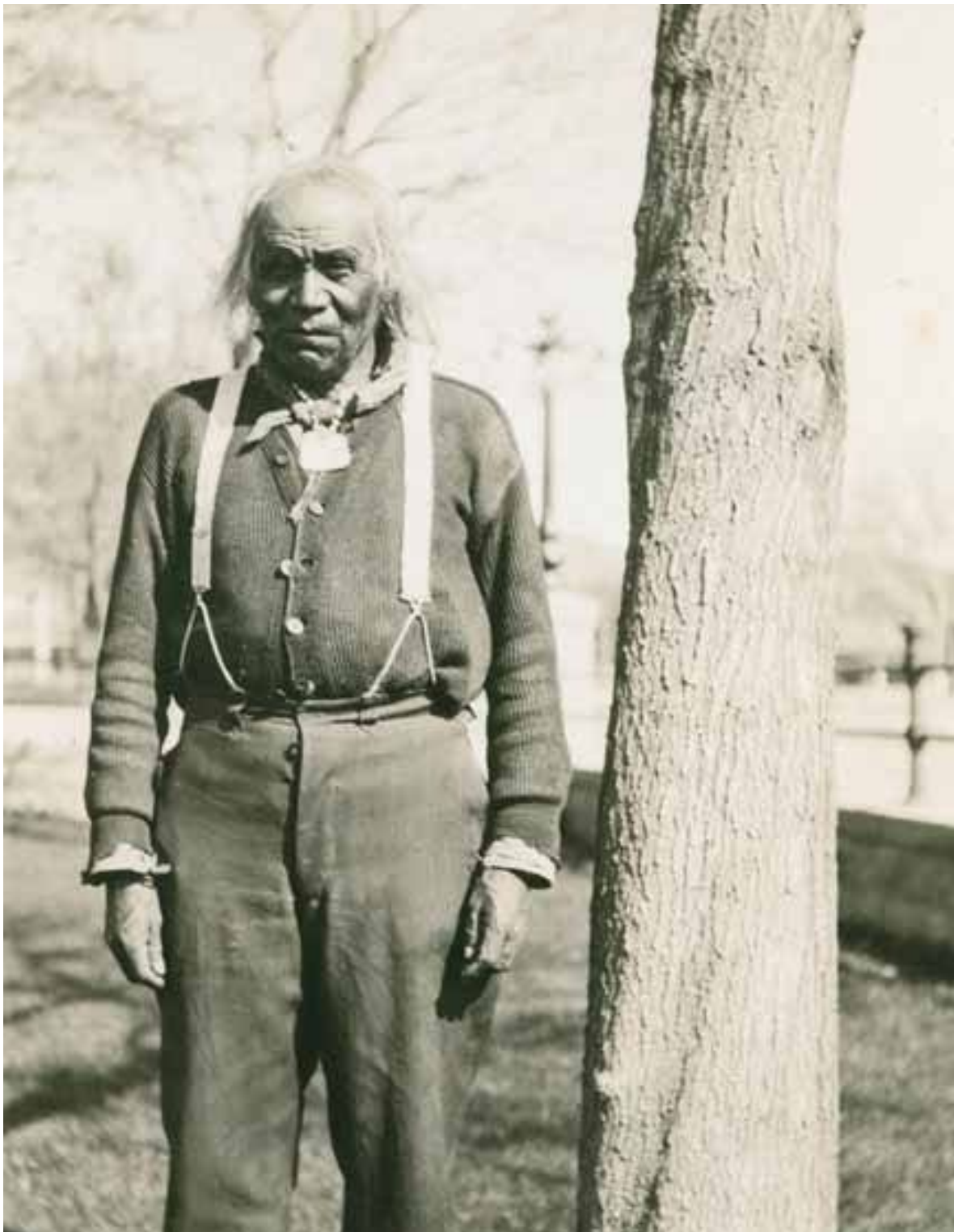
Teofilo Ortega - Tesuque - 1915



Teofilo Ortega - Tesuque - 1915



Teofolo Ortega - Tesuque - 1915



Teofolo Ortega - Tesuque - no date



Jose Candido Herrera - Tesuque - circa 1935



Canuto Suazo - Tesuque - 1924



Canuto Suazo - Tesuque - 1924



Canuto Suazo - Tesuque - 1924



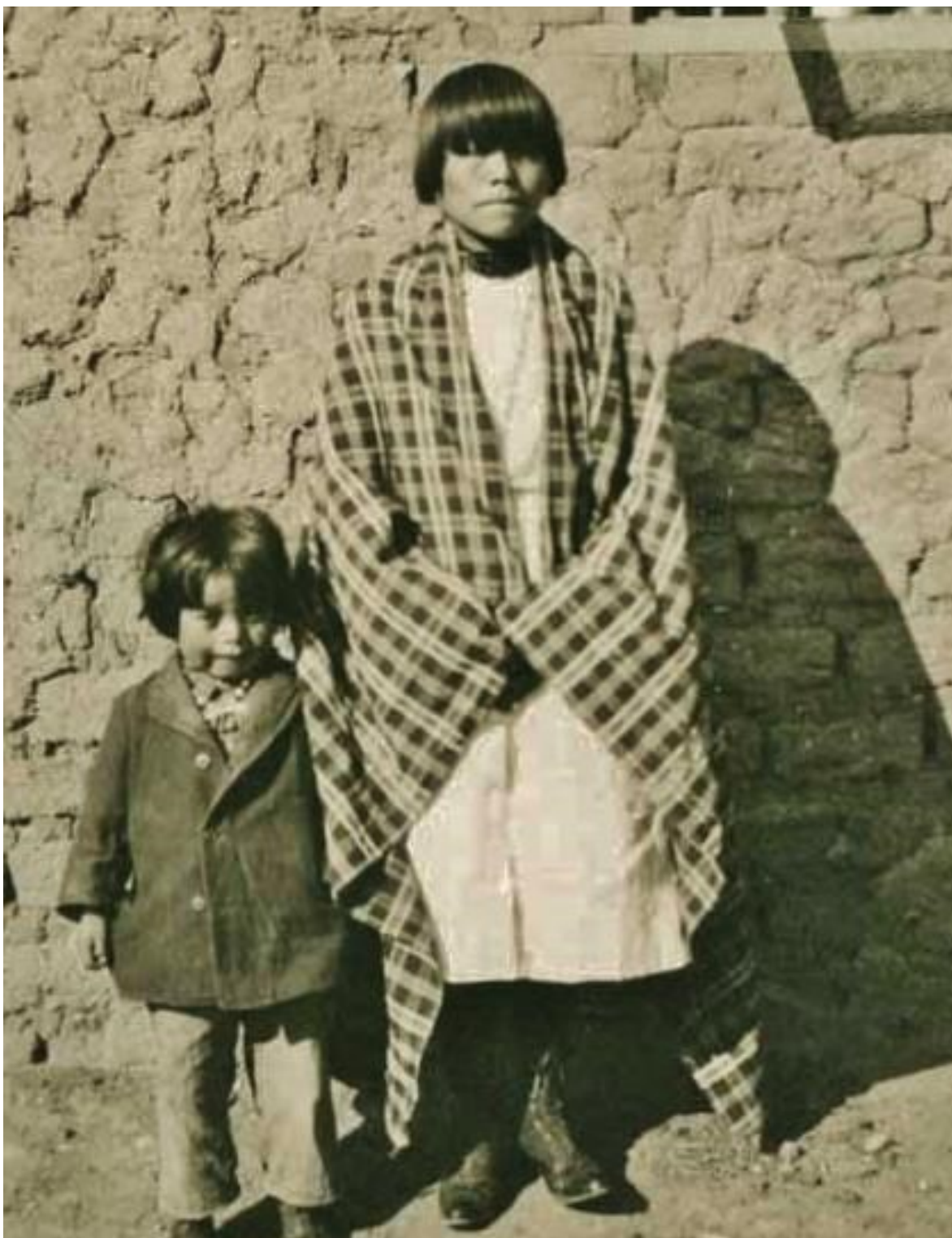
Canuto Suazo - Tesuque - 1924



Canuto Suazo - Tesuque - circa 1930



*Emiliana Romero-Samuel with unidentified children -
Tesuque - 1930*



Jesus La Cruz Herrera, Jesusita Suazo Herrera (Zita Herrera)
- Tesuque - 1915



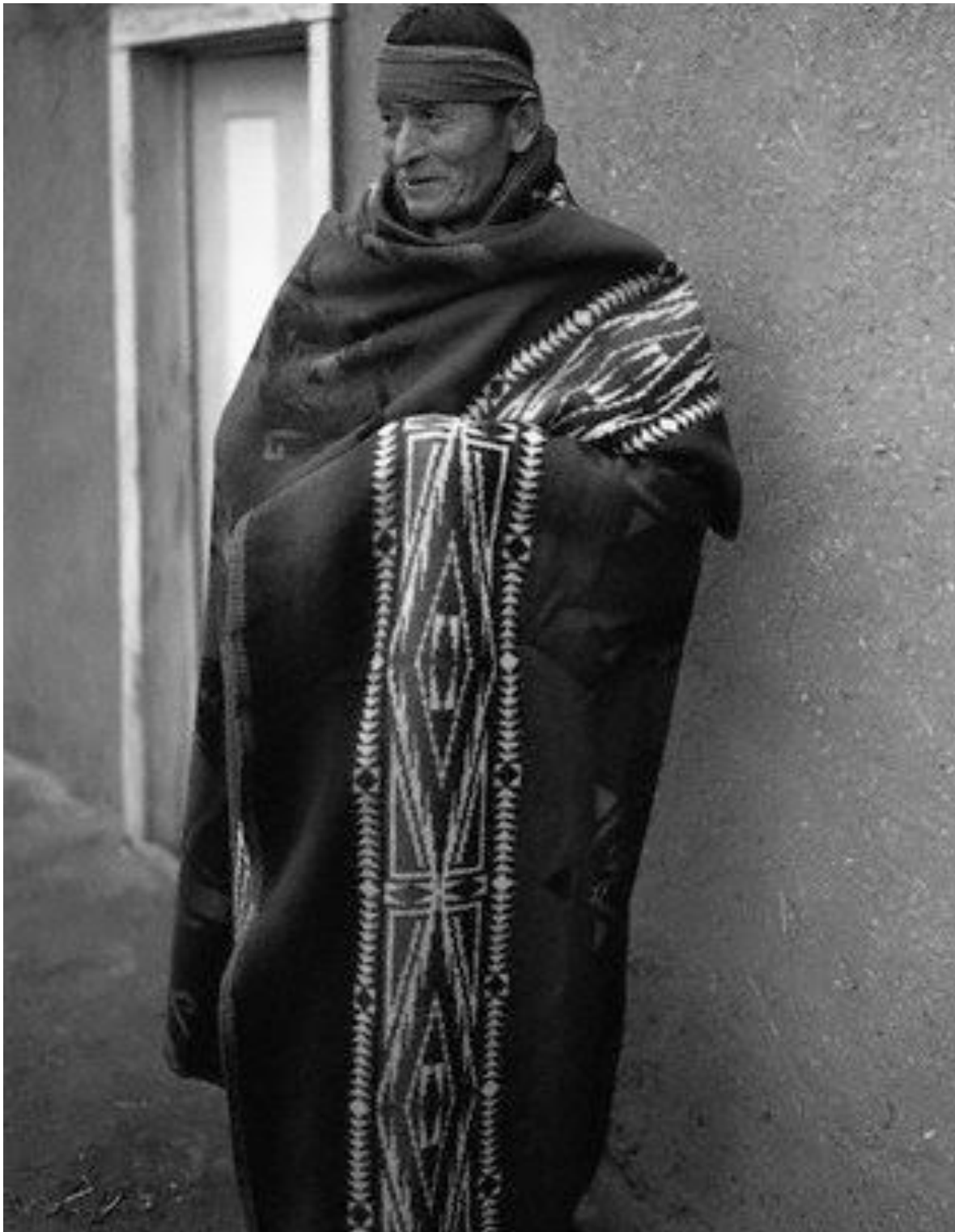
Jose Pino - Tesuque - 1941



Juan Pino - Tesuque - 1941



Juan de Jesus de Pino (aka Juan Pino) - Tesuque - 1930



Julio Abeyta (the husband of Lucaria Abeyta) - Tesuque - 1940



*Julio Abeyta (the husband of Lucaria Abeyta) - Tesuque -
1930*



Marse Vigil - Tesuque - 1924



Marse Vigil - Tesuque - 1924



Tesuque men prepared for a Buffalo Dance - 1924



Nympha Vigil and her baby - Tesuque - 1910



Nympha Vigil and her baby - Tesuque - 1910



Senovio Romero (the husband of Benita Romero) - Tesuque - 1924



Senovio Romero (the husband of Benita Romero) - Tesuque - 1924



Tesuque couple - 1890



Tesuque group with Eagle Dancers - 1924



Tesuque group with Buffalo Dancers - 1941



Tesuque group and spectators - 1874



Tesuque group at Rosario Chapel - 1911



Tesuque group with Eagle Dancers - 1880



Jose Pino - Tesuque - 1941



Tesuque man - 1935



Tesuque group - 1883



Tesuque men - 1885



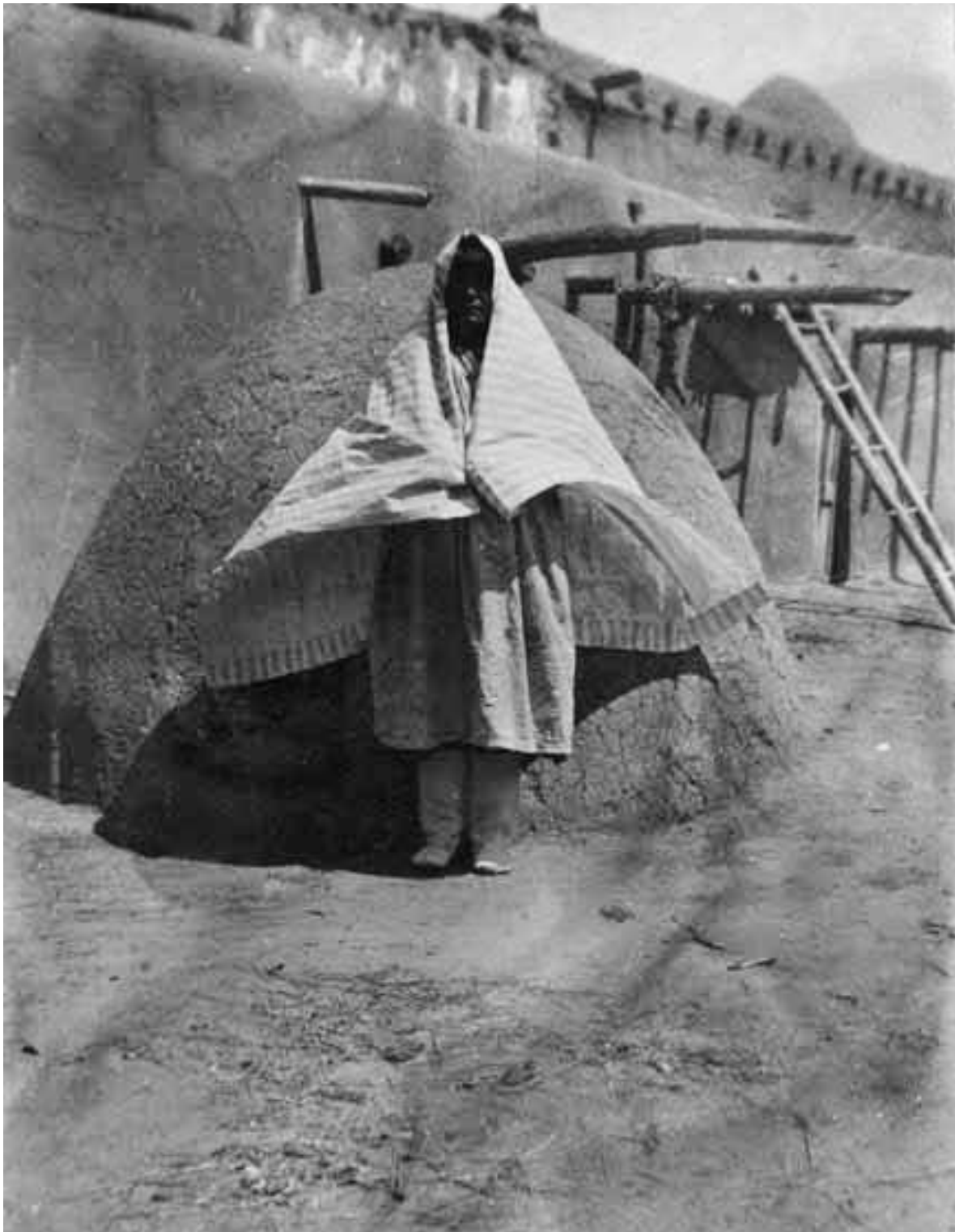
Tesuque Pueblo - 1905



Tesuque woman - 1910



Tesuque postcard - 1910



Tesuque woman - 1920



Tesuque women - 1945



Tesuque women - 1945



Tesuque women and children - 1910



*Tesuque women including Maria C. Herrera holding a child -
1930*



Thomas Vigil - Tesuque - 1924



West side of Tesuque Pueblo - circa 1892



West side of Tesuque Pueblo - circa 1892



Juan Domingo Suasa - Tesuque - 1884



Dionisia Vigil, Katinita Suasa - Tesuque - 1884



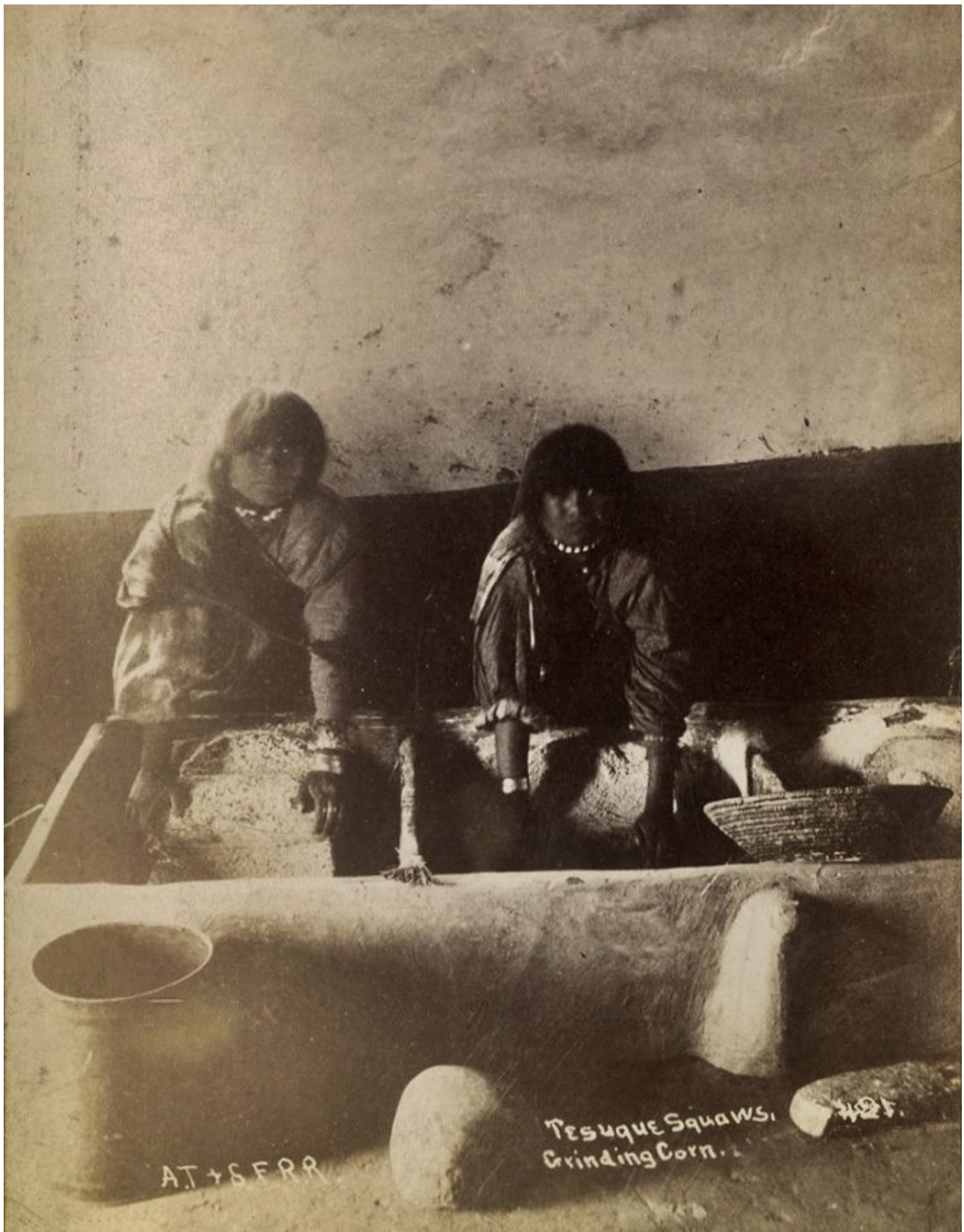
Basilio Herrera (the husband of Maria Herrera) - Tesuque - 1955



Tesuque group with actor Jimmy Stewart (center) during the filming of the movie "The Man From Laramie" at Tesuque Pueblo - 1954



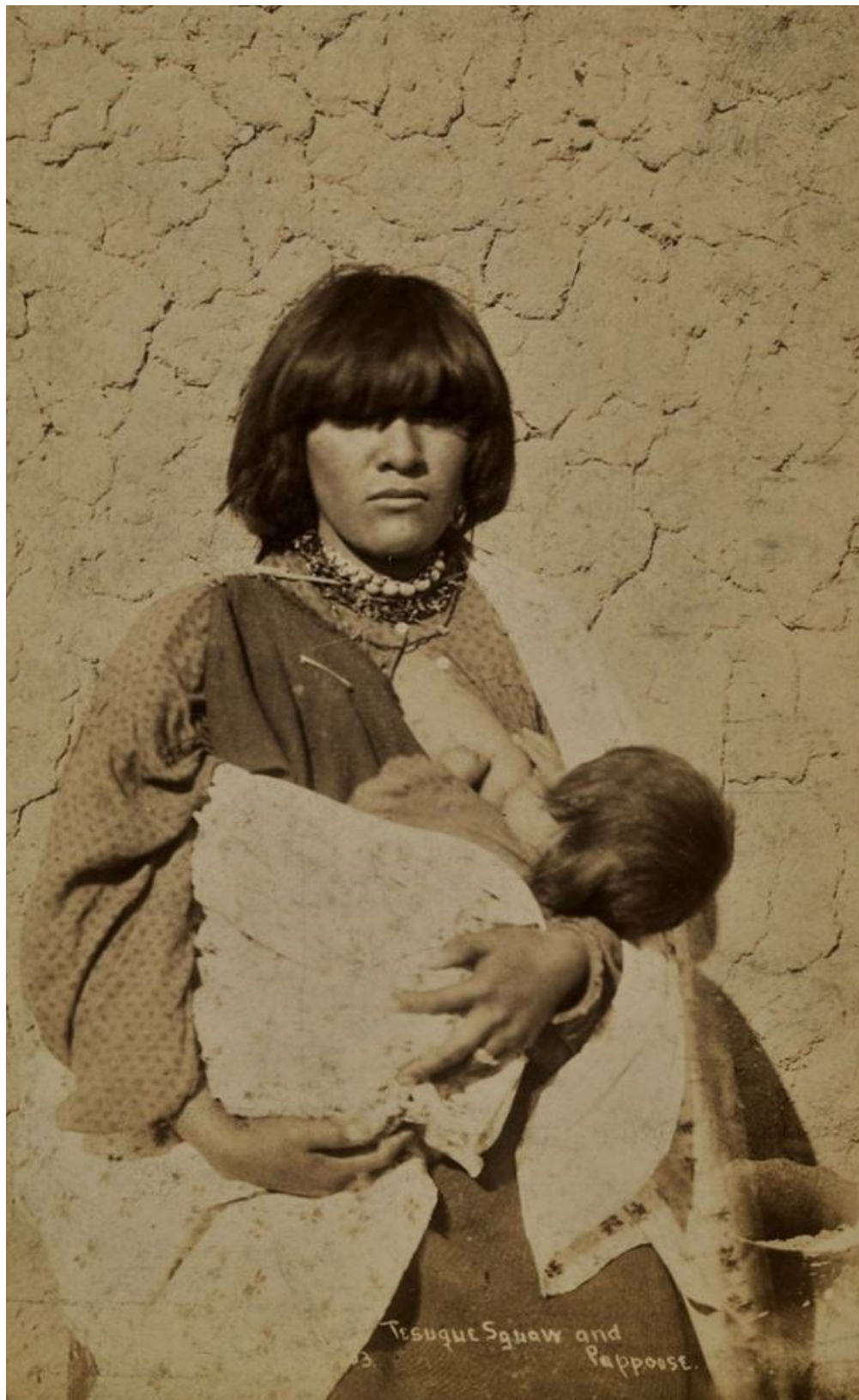
Tesuque women with poet and author Alice Corbin Henderson (center) - before 1949



Tesuque girls grinding corn at the Atchison, Topeka & Santa Fe Rail Road Station in Santa Fe, New Mexico near the Tesuque Pueblo - no date



Tesuque group at the Atchison, Topeka & Santa Fe Rail Road Station in Santa Fe, New Mexico near the Tesuque Pueblo - no date



Tesuque mother nursing her child at the Atchison, Topeka & Santa Fe Rail Road Station in Santa Fe, New Mexico near the Tesuque Pueblo - no date



Tesuque mother and her son at Tesuque Pueblo in New Mexico - no date